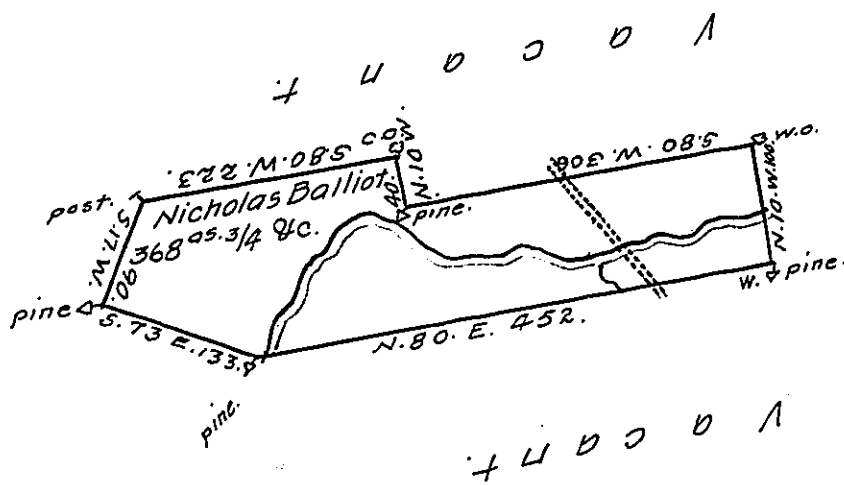


Hazle
Luzerne



A draft of a tract of land called—situate in the County of Northumd, containing three hundred and sixty Eight acres $3/4$ & allowe. Surveyed for Nicholas Balliot the 19th. day of October, 1785 by virtue of a warrant dated the 23d day of Nov^r, 1784

To Daniel Brodhead, Esq^r,
SURVE Gen^l.

by Wm. Gray, D.S.

Situate partly in Mifflin Township Northumberland County and partly in Nescopeck Township, Luzerne County.

IN TESTIMONY that the above is a copy of the original remaining on file in the Department of Internal Affairs of Pennsylvania, made conformably to an Act of Assembly approved the 16th day of February, 1833, I have hereunto set my Hand and caused the Seal of said Department to be affixed at Harrisburg, this twenty first day of August, 1911.

Henry Houck
Secretary of Internal Affairs.